

Ectomycorrhizal Associations of the Dipterocarpaceae

Francis Q. Brearley¹

School of Science and the Environment, Manchester Metropolitan University, Chester Street, Manchester, M1 5GD, U.K.

ABSTRACT

Dipterocarps are one of the most important tree families in the lowland forests of Southeast Asia and are somewhat unusual among tropical trees in that they form ectomycorrhizal (EcM) symbiotic root-inhabiting fungal associations. It has been hypothesized that dipterocarps have been partnered in this mutualistic association prior to the separation of Gondwana. Under many conditions EcMs form rapidly on dipterocarp seedlings through inocula present in the soil, although few studies have been conducted to provide evidence that they improve seedling establishment and performance. There are hundreds of EcM species associated with dipterocarps. Fungal fruit body surveys suggest that the most important families are Amanitaceae, Boletaceae, and Russulaceae, although Thelephoraceae also become numerically important when root tips are examined. EcM communities are affected by various biotic and abiotic factors, as well as anthropogenic perturbations, and the importance of these in structuring EcM communities is examined herein.

Key words: fungi; molecular identification; mutualism; mycorrhiza; seedling performance; soils; symbiosis.

LOWLAND EVERGREEN RAIN FORESTS OF SOUTHEAST ASIA ARE HIGHLY SPECIES RICH. Their tree communities are dominated by members of the Dipterocarpaceae (Proctor *et al.* 1983, Newman *et al.* 1996, 1998, Brearley *et al.* 2004, Slik *et al.* 2009). In addition to their ecological dominance, dipterocarps also provide significant economic resources, producing not only valuable timber, but also a number of non-timber forest products such as oils, nuts, and resins (Shiva & Jantan 1998). With continued degradation of forests in the Southeast Asian region, there is an increased interest in establishing plantations of forest trees and promoting restoration strategies (Kettle 2010). Due to their important ecological and economic roles, understanding the growth and regeneration of dipterocarps is a research priority. The role of light and nutrients in seedling growth and performance has received much attention in this regard; that of mycorrhizas has often been invoked but much less studied.

Mycorrhizas are an intimate symbiotic association between specialized root-inhabiting fungi and the roots of living plants; they are generally considered mutualistic as benefits are accrued by both partners. The plant provides the fungus with carbon derived from its photosynthetic activity and, in return, the fungus can improve nutrient uptake, growth, water relations, pathogen and heavy metal resistance of the plant (van der Heijden & Sanders 2002, Smith & Read 2008, and references therein). Mycorrhizas are important as they extend roots' nutrient depletion zones, especially for poorly mobile inorganic nutrients such as phosphorus (P) that are found at especially low concentrations in many tropical soils (Proctor *et al.* 1983, Brearley 2003, Brearley *et al.* 2004, Paoli *et al.* 2006). Early work on mycorrhizas focused on this nutrient uptake capability of the symbiosis but we are now aware of the multifunctional role played by mycorrhizas in enhancing protection against a number of environmental stresses,

and it is clear that this role acts independently of improved plant nutrition (Read 1986, Newsham *et al.* 1995). This led Read (1998) to propose a definition of mycorrhizas as 'structures in which a symbiotic union between fungi and plant roots leads to increases in fitness of one or both partners'. An estimated 95 percent of plant species are in characteristically mycorrhizal families (Read 1999) and they are found in almost every terrestrial ecosystem. The arbuscular mycorrhizal (AM) symbiosis, formed by members of the Glomeromycota, is the most abundant type of mycorrhiza, and most tropical trees form AMs (de Alwis & Abeynayake 1980, St. John 1980, Chalermpongse 1987, Newbery *et al.* 1988, Moyersoen 1993, Béréau *et al.* 1997, McGuire *et al.* 2008). An important, and often dominant, minority of tropical tree families, including the Dipterocarpaceae, form EcMs (Fig. 1) that are mostly members of the Basidiomycota or Ascomycota. EcM trees in the tropics often form monodominant stands (Connell & Lowman 1989, Henkel 2003, Peh *et al.* 2011) but the dipterocarps rarely do so.

In this review, the current state of knowledge of dipterocarp EcM fungi and their role in tropical ecosystems is outlined. The vast majority of current work is from the Asian dipterocarps and studies on these species, therefore, form most of the body of this review. The focus is on the role of EcMs in improving seedling growth and performance (see also Brearley 2011), and on EcM species diversity and factors affecting patterns of diversity. The article starts with a brief history of dipterocarp mycorrhizal research and the biogeographical insights it has provided. Then the role of EcMs in the growth and performance of dipterocarp seedlings under both nursery and field conditions is examined. The range of fungal species that form EcMs on dipterocarps is then explored, and how new molecular techniques have improved our knowledge of dipterocarp EcMs is outlined. Key determinants of EcM community dynamics, including various biotic and abiotic factors and perturbations, are then

Received 16 April 2011; revision accepted 10 October 2011.

¹Corresponding author; e-mail: f.q.brearley@mmu.ac.uk

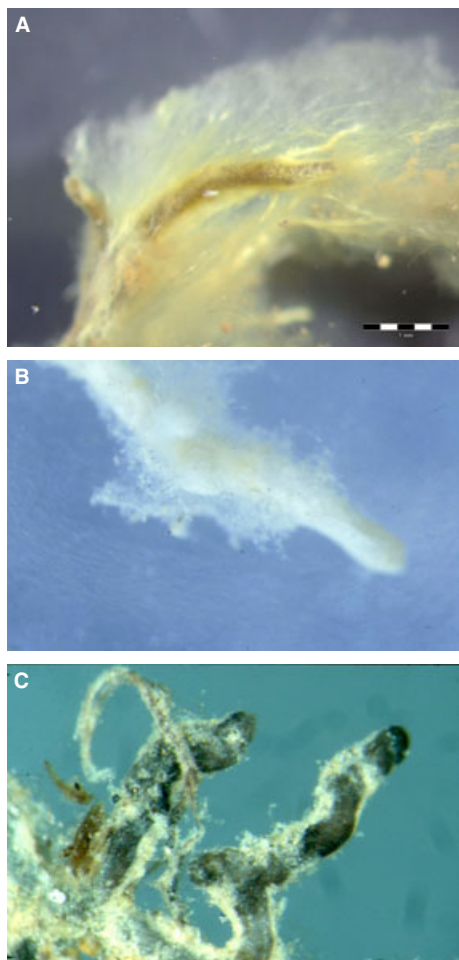


FIGURE 1. Ectomycorrhizas formed by: (A) *Scleroderma* species; (B) *Inocybe* species; and (C) Thelephorales species on roots of various member of the Dipterocarpaceae (Photograph 1C reproduced with permission from Götz Palfner).

evaluated. Colonization by other symbiotic fungi is briefly assessed. The review concludes with some thoughts on future research priorities.

BRIEF HISTORY OF DIPTEROCARP MYCORRHIZAL RESEARCH

Van Roosendael and Thorenaar (1924) and de Voogd (1933) both noted the presence of ‘mycorrhizas’ on the roots of dipterocarp seedlings although it is not clear exactly what they saw as they did not publish pictures or record further observations. Although John Corner (1972, among others) noted EcM fungal fruiting bodies in dipterocarp forests he attributed this to the presence of the Fagaceae (long known to be EcM in temperate regions), and it was not until 1966 that Singh recorded that dipterocarps, in common with a few other tropical angiosperms (Peyronel & Fassi 1957), formed EcMs. Early work (1960s to 1980s) simply noted various dipterocarp species as forming EcM associations (Singh 1966, de Alwis & Abeynayake 1980, Alexander &

Högberg 1986) and made cursory attempts to ascertain which fungal species were putative EcM formers (Hong 1979). The first attempts at *in vitro* synthesis of EcMs were not reported until the late 1980s (Louis & Scott 1987, de Alwis & Abeynayake 1988) along with early reports of increased growth of inoculated seedlings also around this time (Hadi & Santoso 1988, Santoso 1988). In the late 1980s and early 1990s, Lee Su See's work advanced EcM research by examining functional aspects of the symbiosis *e.g.*, interactions of EcMs with nutrients to determine seedling growth (Lee & Alexander 1994), and the succession of EcM fungi on seedlings (Lee & Alexander 1996) and her collaborations with Frédéric Lapeyrie advanced inoculation techniques with a range of fungal species (Yazid *et al.* 1994, 1996, Lee *et al.* 1995b, 2008). Throughout the 1990s to mid-2000s the IUFRO-SPDC funded BIO-REFOR conferences led to more work being published in the region; although some of these articles were valuable, many had limited value due to inappropriate design or lack of detail in reporting (Brearley 2011). The involvement of Roy Watling in the 1990s started to build knowledge of the fungal flora of Peninsular Malaysia from the strong foundations laid by Corner (Watling & Lee 1995, 2007, Watling *et al.* 1995, 1998, 2002, 2006, Watling & Lee 1998, Lee *et al.* 2002a, 2003, Lee 2005).

Subsequent eco-physiological work examined how EcM communities were affected by biotic and abiotic perturbations (Brearley *et al.* 2003, 2007, Brearley 2006) and examined the role of EcMs in organic nitrogen acquisition (Brearley *et al.* 2003). The first molecular study of dipterocarp EcM communities appeared in 2003 (Sirikantaramas *et al.* 2003), and since then there have been a few more (Moyersoen 2006, Yuwa-Amornpitak *et al.* 2006, Tedersoo *et al.* 2007a, Peay *et al.* 2010) although until the comprehensive study by Peay *et al.* (2010) these had mostly focused on rare or outlying members of the Dipterocarpaceae. Most recently, advances based on early nursery-based inoculation studies have been extended to the field performance of dipterocarp seedlings (Brearley 2003, Turjaman *et al.* 2007, Lee *et al.* 2008, Tata *et al.* 2010).

INSIGHTS FROM ECTOMYCORRHIZAS INTO THE ORIGINS AND BIOGEOGRAPHY OF THE DIPTEROCARPACEAE

The biogeography of the Dipterocarpaceae is interesting as the vast majority of the 520 or so species are found in Southeast Asia with around 30 species in Africa and two in South America (Dayanandan *et al.* 1999). The consistent EcM status of Dipterocarpaceae in Southeast Asia, the dipterocarp sub-family Monotoideae in Africa and the Neotropical genus *Pakaraimaea*, suggests a common EcM ancestor and evolution of the EcM habit before continental separation of Gondwana. Ducouso *et al.* (2004) placed the origin of the EcM habit at least 88 million years ago, prior to the separation of Madagascar and India, as the closest relative of the Dipterocarpaceae sharing a common ancestor, the Madagascan Sarcoleanaceae, are also EcM. The more recent discovery by Moyersoen (2006) that *Pakaraimaea dipterocarpaceae*, basal

in the dipterocarp clade, is also EcM suggests an earlier origin of the EcM habit to around 135 million years ago before the continental separation of South America from Africa. This predates the earliest EcM fossils, which are around 50 million years old (LePage *et al.* 1997, Beimforde *et al.* 2011) and sets the evolution of the EcM habit on the same timescale as the rise and radiation of the angiosperms. The evidence is not conclusive, however, as Alexander (2006) suggests that the Dipterocarpaceae might not have been EcM prior to the separation of the continents but became EcM at a later stage.

EFFECTS OF ECTOMYCORRHIZAL COLONIZATION ON THE GROWTH AND PERFORMANCE OF DIPTEROCARP SEEDLINGS

The importance of EcMs for dipterocarp seedling growth and performance has been reviewed recently (Brearley 2011) and so this topic is only briefly addressed herein. Numerous nursery experiments show that EcMs improve dipterocarp seedling growth and nutrient uptake (Hadi & Santoso 1988, 1989, Santoso 1988, 1991, Lee & Alexander 1994, Yazid *et al.* 1994, 1996, Turjaman *et al.* 2005, 2006, Lee *et al.* 2002b, Lee *et al.* 2008) and facilitate access to organic N sources (Brearley *et al.* 2003). These experiments have often been conducted with exotic EcM isolates, as it has proved difficult to isolate fungi from fruit bodies found in Southeast Asian forests. Simple observations and experiments have also correlated seedling biomass (Turner *et al.* 1993), relative growth rates (Saner *et al.* 2011), and foliar P concentrations (Lee & Lim 1989) with percentage EcM colonization. It should be reiterated, however, that most of the above experiments have been conducted under controlled nursery conditions, sometimes with only a single species of EcM inoculated onto the roots of the experimental seedlings.

Experiments under field conditions are rarer and seedlings do not show as clear a response to the presence of EcMs when planted in natural forest or rubber agroforest (Brearley 2003, Tata *et al.* 2010). For example, there was no clear biomass response of *Hopea nervosa* and *Parashorea tomentella* seedlings to a reduction in EcM colonization by fungicide addition, although foliar nutrient concentrations did show a decline (Brearley 2003). There are significant challenges, however, in conducting field experiments, the major one being that it is very difficult to create truly non-mycorrhizal controls. Similarly, for inoculation experiments, such as that of Tata *et al.* (2010), where EcM inoculum is already present in the soil, the benefits of inoculating seedlings are not clear, especially if the inoculated EcM species does not remain on the roots of the seedlings. In contrast, the work of Turjaman *et al.* (2007) in degraded peat swamp forest did show improved growth of inoculated dipterocarp seedlings when out-planted in a degraded peat swamp area. This suggests that EcMs are most likely to benefit seedling performance when seedlings are planted in degraded areas where suitable EcM inoculum is not available, such as mine tailings (Lee *et al.* 2008), burnt areas (Akema *et al.* 2009), degraded peatlands (Turjaman *et al.* 2007) or areas previously used for agriculture (Ingleby *et al.* 2000). In

many cases, such as in logged forests, EcM colonization occurs rapidly and naturally (Lee & Alexander 1996, Lee *et al.* 1996b) and under such conditions inoculation might not be worthwhile (Brearley 2011). Furthermore, inoculated EcM species do not always remain on the seedling roots, for example Chang *et al.* (1994, 1995) showed that a species of *Pisolithus* in Malaysian inoculation experiments had mostly disappeared from roots 6 mo after colonized seedlings were planted into the field.

Clearly, we need to further evaluate the growth and survival of EcM versus non-EcM seedlings in the field, as positive responses to EcMs in simplified nursery environment are unlikely to be representative of those found in forest sites. In addition, we need an effective way to create truly non-mycorrhizal control seedlings for comparisons with experimental seedlings.

NURSING ROLE OF PARENT TREES

Early colonization of dipterocarps is dependent upon mycorrhizal connections made with parent trees (Alexander *et al.* 1992), but the importance of these connections for carbon transfer between plants *via* hyphal connections of non host-specific fungi, which has been demonstrated by Simard *et al.* (1997) in boreo-temperate forests, is not clear. Potentially, movement of compounds through hyphal connections could provide an important carbon subsidy to maintain dipterocarp seedlings in a light-limited state in the forest understory. Two experiments conducted in Malaysian Borneo have shown that inter-individual connections by EcM hyphal networks do not appear to influence dipterocarp seedling growth (Brearley 2003, Saner 2009). These results contrast with that of McGuire (2007) who found that incorporation into an EcM hyphal network was important for seedling growth in a similarly EcM-dominated forest of Guyana. Differences among these forest systems could be related to the differences in tree diversity between the sites, with a monodominant stand in Guyana compared with the high-diversity sites in Southeast Asia. Where there are many EcM parent trees belonging to different species, as in Southeast Asia, supporting heterospecific seedlings with carbon compounds may well be selected against.

FUNGAL FLORAS AND NEW FUNGAL SPECIES

The fungal flora of most dipterocarp forests is still very poorly known. Hong (1979) made the first note of putative EcM fungi including *Amanita*, *Boletus*, *Gyrodon*, *Lactarius* and *Russula* species from around dipterocarps at the Forest Research Institute of Malaysia's grounds at Kepong, Peninsular Malaysia. Malaysia is probably one of the best-documented tropical countries in terms of its fungal flora but, even here, it is estimated that only 20 per cent of the Peninsula's larger fungi has been collected (Corner, in Lee *et al.* 1995a).

The main site where detailed fruit body surveys have been carried out is Pasoh Forest Reserve in Peninsular Malaysia where Lee Su See, Roy Watling and colleagues have been working since the early 1990s (Watling *et al.* 1998, 2002, 2006, Lee *et al.* 2002a, 2003). From these surveys, we know that the most common

families found as fruiting bodies are Russulaceae, Boletaceae and Amanitaceae, and 296 species of fruiting body (in 19 predominantly EcM-forming families) have been recorded over a 6 yr period (Lee *et al.* 2003). Around two-thirds of these were undescribed, and over three quarters of the species were only collected once. Good information on fungal communities is also available from planted dipterocarps at Kepong, Peninsular Malaysia (Watling & Lee 1995, Lee *et al.* 1996a, Watling & Lee 1998) and natural forest at Wanariset Samboja, Kalimantan (Smits 1994, Yasman 1995) and from Corner's early work in Malaysia and Singapore (Corner 1988).

The fruiting bodies in the more seasonal dipterocarp forests of Thailand are broadly similar at the family level to those in Malaysia and Indonesia, with addition of *Astraens* (Chalermpongse 1987) that appears to be absent from the more aseasonal forests. There are also minor fungal inventories from Uppangala in the Western Ghats of India (Natarajan *et al.* 2005) and Sakaerat in Thailand (Chalermpongse 1987) which show similar patterns to the more extensive inventories. López-Quintero *et al.* (in press) have provided the first records of EcM fruiting bodies associated with the Neotropical dipterocarp *Pseudomonotes tropenbosii* in Colombia.

DESCRIPTIONS OF DIPTEROCARP-ASSOCIATED ECTOMYCORRHIZAS

There are very few published descriptions of dipterocarp EcMs and this hinders research for ecologists and mycologists who lack access to molecular sequencing facilities. Becker (1983) and Lee (1998, Lee *et al.* 1997) described over 25 EcM morphotypes from the roots of *Shorea leprosula*, and this is currently the most comprehensive set of dipterocarp EcM descriptions that we have. Watling *et al.* (1995) described the EcM formed by *Pisolithus aurantioscabrosus*, Tedersoo *et al.* (2007a, b) described the EcMs formed by Sordariomycete and *Coltriciella* species on *Vateriopsis seychellarum* and Jülich (1985) described the distinctive EcMs of *Riessia* and *Riessiella* with abundant cystidia (noted as conidia by Jülich 1985), with Lee *et al.* (1997) showing how these particular species differ from many EcMs in lacking a Hartig net. Lee *et al.* (2010) also described a new Thelephoraceae species (FP160; most probably *Tomentella*) used in Malaysian inoculation trials.

MOLECULAR STUDIES ON DIPTEROCARP-ASSOCIATED ECTOMYCORRHIZAS

Two of the most comprehensive studies of dipterocarp EcM communities have, ironically, been conducted on rare or outlying species within monospecific genera. Moyersoen (2006) found nine EcM species on *Pakaraimea dipterocarpacea* in Venezuela, and Tedersoo *et al.* (2007a) found 18 EcM species on *Vateriopsis sebellarum* in the Seychelles. In Malaysian forests, Sirikantaramas *et al.* (2003) took root samples from five sites and showed that, belowground, the family producing the greatest number of sequences was the Thelephoraceae with just over half of the sequences. Other important families were Boletaceae, Russulaceae, and Scler-

odermataceae. Numerically this was similar to the results of Yuwa-Amornpitak *et al.* (2006) who obtained sequences from root tips from eight sites in Thailand and found, again, Thelephoraceae to provide the greatest number of sequences followed by Russulaceae and Sclerodermataceae. Sirikantaramas *et al.* (2003) also suggested that Thelephoraceae were often found associated with *Shorea* species but did not present further evidence to support their case. Currently, the most comprehensive study we have is that of Peay *et al.* (2010) who examined EcMs in two soil types at Lambir Hills in Sarawak and found that members of the Russulales represented around one-third of the sequences, and the Thelephorales were the fourth most abundant clade (after Boletales and Agaricales). In a dry dipterocarp forest in Thailand, Phosri *et al.* (in press) found Russulales and Thelephorales to be the most important taxa. In addition, Roy *et al.* (2009) determined that EcM fungi were associated with three Thai orchid species (two from forests with dipterocarps). These orchids are highly likely to be obtaining carbon subsidies from the associated dipterocarps. Numerically important fungal groups associated with these orchids were Thelephoraceae, Russulaceae, Clavulinaceae, and Sebaciniales. Tedersoo *et al.* (2011) have also noted the important EcM species in two African forests containing dipterocarps as non-dominant species. Table 1 summarizes the importance of various fungal groups in the studies mentioned above with some additional studies also reported.

Tedersoo and Nara (2010) suggest that tropical regions have lower EcM species diversity than temperate regions due to reduced phylogenetic diversity of host trees, and a simpler soil profile, among other reasons. It is difficult, however, to reconcile this suggestion with the very high diversity of fruit bodies collected by Lee *et al.* (2003) as noted above, especially as belowground diversity has been shown to be higher than aboveground diversity in tropical forest EcM fungal surveys (Henkel *et al.* in press); clearly more work is needed to resolve this problem.

ECTOMYCORRHIZAL COMMUNITY DIVERSITY, DYNAMICS, AND RESPONSES TO PERTURBATIONS

On *Shorea leprosula*, Lee *et al.* (1997) described 24 EcM morphotypes from various sites in Peninsular Malaysia and 36 at Danum Valley in Borneo (Lee *et al.* 1996b), Ingleby *et al.* (1998) found a similar number (26) on the roots of *Shorea parvifolia* as did Moyersoen (2000) on *Shorea pachycarpa* (29). A much higher richness of 56 EcM morphotypes were found on *Hopea nervosa* at Danum Valley (Lee *et al.* 1996b). The number of EcM morphotypes found in two nursery studies (14 and 16 species, Brearley 2003 and Saner *et al.* 2011, respectively) appears to be lower than those found in the field studies as many late-stage fungi (*sensu* Deacon *et al.* 1983) will be absent from nurseries. Individual seedlings may possess up to five different EcM morphotypes with 2–3 being the median number (Lee & Alexander 1996, Brearley *et al.* 2003). A succession of EcM fungi was observed on *Shorea leprosula* seedling root tips during early

TABLE 1. Molecular identification of ectomycorrhizas associated with Dipterocarpaceae hosts in a number of studies. All values are the percentage of sequences found within the particular fungal lineage (taxonomic nomenclature follows Tedersoo et al. 2010). Note that studies are not strictly comparable due to different primers used to amplify fungal DNA.

	Malaysia (Five sites)	Venezuela (<i>Pakaraima dipterocarpaceae</i>)	Thailand (Eight sites) Yuwa-Amornpitak	Seychelles (<i>Vateriaopsis seychellarum</i>)	Sarawak (Lambir Hills)	Sumatra (Jambi) Tata	Thailand (Phitsanulok)	Kalimantan (Bukit Bangkirai)
	Sirikantaramas et al. 2003	Moyersoen 2006	et al. 2006	Tedersoo et al. 2007a	Peay et al. 2010	et al. 2010	Phosri et al. in press	Nara pers. comm.
Ascomycota	-	-	-	-	-	-	-	3
Elaphomycetales	-	-	-	-	1	-	4	-
Helotiales	-	-	-	-	1	-	-	-
Pezizales	-	-	-	-	-	-	3	-
Sordariales	-	-	-	11	5	-	6	-
Basidiomycota	-	-	-	-	-	-	-	-
Agaricales	-	-	3	-	3	-	-	-
/amanita	1	11	3	-	3	-	3	6
/cortinarius	1	11	-	11	10	-	-	6
/hygrophorus	1	-	-	-	-	-	-	-
/inocybe	-	22	9	6	-	-	4	2
/laccaria	-	-	-	-	-	-	1	-
Atheliales	-	-	-	-	3	-	1	-
Boletales	-	-	-	-	5	-	-	15
/boletus	17	-	6	6	11	-	1	-
/pisolithus-scleroderma	10	-	21	6	2	25	3	-
Cantharellales	-	-	-	-	3	-	-	11
/cantharellus	2	-	-	6	3	8	4	-
/clavulina	-	22	-	-	6	8	3	-
Hymenochaetales	-	-	-	17	2	-	-	-
Hysterangiales	-	-	-	-	1	-	-	-
Russulales	16	-	18	6	28	-	32	31
Sebacinales	-	11	-	-	2	8	6	2
Thelephorales	51	-	36	33	12	50	25	25
Unidentified	-	22	3	-	-	-	-	-

seedling establishment, and the number of morphotypes increased over the first 7 mo of seedling growth (Lee & Alexander 1996). Comparisons between seedling EcM communities will therefore be sensitive to seedling age.

Studies on the population structure of dipterocarp EcMs appear to be limited to a single study. Rivièrè et al. (2006) examined the spatial distribution of a *Russula* species in dipterocarp forests dominated by *Vateria indica* and *Dipterocarpus indicus* in the Western Ghats of India. The fruiting bodies were highly aggregated but, using molecular methods, genet size was shown to be very variable, ranging from a number of single fruiting body genets, to the largest genet containing three fruiting bodies with a maximum distance of 70 m between them. These data suggest that *Russula* species can form large genets, in contrast to earlier work that has shown *Russula* species to form relatively small genets (Redecker et al. 2001, Liang et al. 2004).

HOST SPECIFICITY.—Smits (1983, 1985) provided anecdotal evidence suggesting that dipterocarp-associated EcMs are highly host specific. Unfortunately, due to the lack of methodology presented in his articles it makes it difficult to evaluate them. Furthermore, these results do not agree with those found in temperate regions where many fungi have an intermediate to broad host range, certainly at the host genus taxonomic level or above (Molina et al. 1992). Current evidence suggests that host specificity of dipterocarp EcMs is not as common as claimed by Smits (1983, 1985) with weak evidence for host specificity provided by Ingleby et al. (2000) who showed that seedlings of *Dipterocarpus alatus* grown in soil from a *Hopea odorata* plantation in Vietnam formed only one EcM morphotype, and this was different from the four morphotypes on *Hopea odorata* seedlings. Becker (1983) described ten EcM morphotypes from *Shorea leprosula* and *Shorea maxwelliana* at Pasoh of which two were shared between the two hosts. Similarly,

Berriman (1986) showed that three out of 11 morphotypes were shared between three *Shorea* seedling species (*Shorea leprosula*, *Shorea lepidota* and *Shorea macroptera*) and seven were found on only one of the species. In nursery-grown dipterocarp seedlings, seven of 14 EcM morphotypes found were present on the roots of at least three of the four host seedling species of *Dryobalanops lanceolata*, *Hopea nervosa*, *Parashorea tomentella*, and *Shorea leprosula* (Brearley *et al.* 2003, 2007). Lee *et al.* (1996b) recorded 61 EcM morphotypes on the roots of seedlings of *Hopea nervosa* and *Shorea leprosula* in forests at Danum Valley in Sabah, of which 31 were found on both species, 25 were found on *Hopea nervosa* only, and only five were found exclusively on *Shorea leprosula*. Examination of associations of fruit bodies with planted dipterocarp species suggests that *Russula virescens* is putatively associated with at least ten dipterocarp species and *Boletus aureomycelinus* with 21 species (Watling and Lee 1998). All the above evidence suggests a modest amount of host specificity although the degree to which this simply represents random sampling of rare species can only be ascertained with more extensive sampling.

At a higher taxonomic level, two dipterocarp-associated EcM fungi (*Pisolithus aurantioscabrosus* and *Tomentella* FP160) have also been shown to form EcMs on *Acacia mangium* although it is not yet known if these are functionally important (Lee & Patahahyah 2003). Of the 18 species of EcM fungi on *Vateriaopsis seychellarum*, three were shared with *Intsia bijuga*, and another three were shared with introduced *Eucalyptus robusta* (Tedersoo *et al.* 2007a). As a long-isolated island endemic (occurring only on a single island of the Seychelles) and an evolutionary basal lineage, *V. seychellarum* might not, however, be very representative of the Asian dipterocarps in this respect.

RESPONSES TO NUTRIENT AVAILABILITY.—Many studies show that mycorrhizal colonization decreases under conditions of higher soil, and especially P, fertility (Jones *et al.* 1990, Baum & Makeschin 2000, Treseder 2004) but the results from dipterocarps are variable. Turner *et al.* (1993) found that NPK fertilization increased percentage EcM colonization on *Shorea macroptera* seedlings, and the correlation between percentage EcM and seedling biomass was stronger if the unfertilized seedlings were analyzed alone. Similarly, Lee and Lim (1989) found that only seedlings from a less fertile site had a correlation between percentage EcM colonization and foliar P concentrations. Irino *et al.* (2004) showed that addition of a NPK fertilizer increased EcM colonization on pot-grown *Dryobalanops lanceolata*, although colonization was very low (8%) in the control seedlings. In contrast, addition of P in various studies had no effect on % EcM on *Shorea leprosula* (Suhardi 2000), two species of *Dryobalanops* in two contrasting soil types (Palmiotto *et al.* 2004), or on *Hopea nervosa* and *Shorea leprosula* (Brearley *et al.* 2007). However, the last study did find species-specific responses to increased nutrient availability, most notably for *Riessiella* sp. that increased following P fertilization. This suggests that *Riessiella* might not be a fully mutualistic fungus (Brearley *et al.* 2007); further evidence for this hypothesis is that it also does not possess a Hartig Net (Lee *et al.* 1997), which is the site of nutrient transfer between the fungus and the plant.

The lack of a consistent response to P fertilization in these studies suggests that EcMs are important even under conditions of higher nutrient supply as colonization rarely declines, suggesting that they are still involved in assisting in seedling nutrient uptake.

When an organic nutrient source of mixed leaf litter was added to the soil medium there was no change in percentage EcM colonization for three dipterocarp seedling species (Brearley *et al.* 2003). In contrast, the diversity of EcM species on seedling's roots was reduced with litter addition; this was partly driven by the reduction in colonization by *Cenococcum geophilum*. Addition of *Imperata cylindrica* (alang-alang) litter reduced percentage EcM colonization in *Shorea bracteolata* (Suhardi *et al.* 1993), perhaps due to its allelopathic nature (Brook 1989).

RESPONSES TO SOIL TYPES.—The EcM community on the roots of nursery-grown *Dryobalanops lanceolata* is considerably different when seedlings are grown on ultramafic (with high levels of metals such as Fe, Mg, Ni, Co, and Cr) as compared to a more typical non-ultramafic ultisol soil (Brearley 2006), notably in that *Cenococcum geophilum* and *Inocybe* spp. decreased and *Boletales* sp. increased in ultramafic soils, and EcM diversity was also higher. Similarly, Iwamoto and Kitayama (2002) found 11 EcM morphotypes in ultramafic soil compared to only two in a sedimentary soil from dipterocarp-dominated forests at around 700 m asl on Mount Kinabalu in Borneo.

Sandy soils at Lambir Hills, Sarawak, had a greater number of EcM species than clay soils (65 vs. 41), perhaps due to more differentiated soil horizons of the sandy soils or the lower nutrient concentrations allowing coexistence of a greater number of species (Peay *et al.* 2010). Such results might also, however, be due to different tree compositions on the different soil types. There was also evidence of more phylogenetic clustering of EcM species on the clay soil, giving rise to a community more dominated by Russulales and Thelephorales and lacking Cortinariaceae. Seedlings of *Dryobalanops lanceolata* (but not *D. aromatica*) at Lambir Hills had more than double the biomass of EcM when grown on their preferred soil type (clay and sandy soils, respectively; Palmiotto *et al.* 2004).

RESPONSES TO IRRADIANCE.—Studies examining changes in EcM colonization in response to differing irradiances are somewhat contrasting, most likely this is not only due to changes in carbohydrate flow from plant to fungus but will also be due to the differing environmental conditions associated with higher irradiance, such as higher soil temperatures. High light conditions (*e.g.*, in forest gaps) appear to increase EcM colonization (Becker 1983, Ingleby *et al.* 1998). EcM colonization on five Sri Lankan *Shorea* species was also greatest under higher irradiances, often under full sunlight, even though this did not correspond to conditions most suited to seedling growth of these species (Tennakoon *et al.* 2005). In contrast, Yasman (1995) found the greatest EcM colonization under irradiances where seedling growth was also most rapid, although other studies have shown no clear difference among different light treatments of EcM abundance on seedlings of two contrasting species, *Shorea leprosula* and *Hopea nervosa*

(Brearley *et al.* 2007). When considering diversity of EcMs under differing conditions we may also need to examine the size of the root system and the number of root tips present, as, analogous to a species-area effect, larger root systems with more root tips may well host more EcM species (see Taylor 2002).

RESPONSES TO BURNING.—Tata *et al.* (2003) did not find any EcM fruit bodies in forests burnt in 1998 in East Kalimantan (examined in 2000) and, using two dipterocarp seedling species as bait plants, she found that there was no difference in the proportion of seedlings with EcM (although values for both species were low at around 5%) among seedlings grown in the burnt and unburnt forest soils. In contrast, Akema *et al.* (2009) found that in a severely burnt site (examined in 2002) there were no EcM root tips in the soil, although there were some fruiting bodies of typically early stage fungi (*Laccaria vinaceoavellana*). In the moderately burnt site, four EcM morphotypes were found, with dominance by one species, compared to a much more even EcM community in undisturbed forest where eight morphotypes were found. There was also an indication that EcMs in the unburnt forest were concentrated in the surface soil layer, but were more evenly distributed in the soil in the moderately fire-affected site. Several reasons for severe reduction in EcMs in burnt forests include changed microclimate, changes in the input of leaf litter, volatilization of organically bound nutrients, the death of host trees, and possible sterilization of upper layers of the soil by the fires (Certini 2005).

RESPONSES TO LOGGING DISTURBANCE.—Initial fruit body data from Pasoh showed slightly more EcM species in logged (98) forest than unlogged (75) forest (largely due to more *Russula* species), although only around 10 percent of species was shared by both forest types (Watling *et al.* 1998). Additional data revealed that logged forests contained only 32 percent of the fungal flora of the forest reserve as a whole (Watling *et al.* 2002), although this number is difficult to put into context given the differences in area and sampling effort between the logged and unlogged forests. Lee *et al.* (1996b) found no difference in percentage EcM on *Hopea nervosa* and *Shorea leprosula* in recently logged (up to 3 yr previously) and unlogged plots at Danum Valley, Sabah, and the number of EcM morphotypes on the roots of the seedlings showed no consistent patterns across the three paired sites studied. Of the 61 EcM morphotypes, 30 were exclusive to unlogged forest whereas 16 were restricted to logged forest; furthermore, of 29 EcM morphotypes which were found only in one of the 16 plots, around three quarters of these were found in unlogged forest only, suggesting that logging may have more of a negative impact on uncommon EcM morphotypes. Ingleby *et al.* (1998) examined EcMs on *Shorea parvifolia* 9 mo after hand logging and found an increased diversity of EcM morphotypes under the logged, higher irradiance conditions. However, in this study it is difficult to disentangle the effects of logging from increased light levels created by logging disturbance. The immediate impacts of logging on the diversity and functioning of the EcM communities has not yet been assessed.

COLONIZATION BY OTHER (SYMBIOTIC) FUNGAL STRUCTURES

There are reports of some dipterocarps also forming arbuscular mycorrhiza (AM) associations (Shamsuddin 1979, Chalermpongse 1987, Ibrahim *et al.* 1995, Dhungana *et al.* 1996, Shi *et al.* 2002, Tawaraya *et al.* 2003, Shi *et al.* 2007) and an important question is how common is dual colonization, and are interactions among colonizers beneficial to the host plants, as seen by Chen *et al.* (2000) for eucalypts? The only data on dual colonization did not find a difference in the relative growth rate of *Hopea odorata* seedlings with EcM alone (38 out of 54 seedlings) or dual EcM/AM colonization (16 out of 54 seedlings) (Ibrahim *et al.* 1995). Ectendomycorrhizal colonization has also been reported in *Shorea parvifolia* (Louis 1988) and other dipterocarps (Tupas & Sajise 1976, Chalermpongse 1987). All the above information suggests that there could be a considerable diversity of mycorrhizal morphologies in the Dipterocarpaceae, and additional morphological information on mycorrhizal symbioses is needed.

FUTURE WORK

Increased knowledge of dipterocarp-associated EcM fungal community structure is being facilitated by extensive and long-term fruiting body surveys as well as molecular analyses of belowground EcM communities. Nursery and field based studies are improving understanding of growth and nutrition relations of EcM dipterocarp seedlings (Brearley 2011). The following areas for future research on dipterocarp-associated EcM fungi and plant-fungal ecosystem interactions are suggested:

- (1) Bring more EcM fungi into culture and test them for functional symbiotic capabilities. Fungi that appear to promote plant performance should be further investigated in field studies where the ecological importance of EcM for dipterocarp growth and survival is most important although currently equivocal.

- (2) It is important to determine the roles that fungi might be playing in ecosystem nutrient cycling processes. How do they influence leaf litter decomposition and the subsequent release of nutrients? This might be achieved by analyses of extracellular enzyme activities. Do EcMs influence ecosystem processes? A nitrogen isotopic budget of ecosystem compartments might shed some light on the importance of EcM fungi in nitrogen-cycling processes (see Hobbie & Hobbie 2008).

- (3) Community studies on EcM root tips and fruiting bodies are needed, as are studies of community dynamics in response to land-use change or other current global changes. Our understanding of EcM responses to logging remains rudimentary, and it is not clear which species or groups of species are more or less affected by disturbances. Although some studies have suggested that temperate and tropical EcM communities have similar diversity, tropical studies are mostly short term and have not examined, for example, differentiation by depth or seasonal changes. Linking fungal diversity with ecosystem processes in tropical

forests, and how such relationships are affected by disturbances is another area of considerable research importance.

(4) Taxonomic capacity for fungal studies in the appropriate geographical regions needs to be improved, for both traditional taxonomy as well as molecular taxonomy. Herbaria provide a valuable repository of sequence diversity (e.g., Brock *et al.* 2008) and sequences from identified fungal fruit body specimens would allow us to relate belowground to aboveground fungal diversity in a more meaningful way.

(5) We should be determining the ecophysiological requirements of selected functionally important tropical EcM isolates. Other than those studies on species of interest for inoculation schemes (Patahayah *et al.* 2003, Brearley *et al.* 2005) there is minimal knowledge on the ecophysiology of tropical EcM fungi. For example, what are their temperature and nutrient requirements? Can they access organic nutrients, as has been shown in temperate regions?

(6) And finally, what is the morphological diversity of mycorrhizal types? Is dual mycorrhizal colonization common and functionally important? If so, what are the developmental, physiological, and environmental factors controlling potential dual colonization?

ACKNOWLEDGMENTS

I thank the British Ecological Society for funding my PhD research on dipterocarp ectomycorrhizas in Sabah, Malaysia (1999–2003) and Dr. Lee Su See and her staff for collaboration and support of my current research in Peninsular Malaysia (2009 onwards). David Burslem, Jaboury Ghazoul, Bernard Moyersoen and two anonymous reviewers provided helpful comments that improved the manuscript.

LITERATURE CITED

- AKEMA, T., I. NURHIFTISNI, SUCIATMIH, AND H. SIMBOLON. 2009. The impact of the 1998 forest fire on ectomycorrhizae of dipterocarp trees and their recovery in tropical forests of East Kalimantan, Indonesia. *JARQ* 43: 137–143.
- ALEXANDER, I. J. 2006. Ectomycorrhizas – out of Africa? *New Phytol.* 172: 589–591.
- ALEXANDER, I. J., AND P. HÖGBERG. 1986. Ectomycorrhizas of tropical angiospermous trees. *New Phytol.* 102: 541–549.
- ALEXANDER, I. J., A. NORANI, AND S. S. LEE. 1992. The role of mycorrhizas in the regeneration of some Malaysian forest trees. In A. G. Marshall, and M. D. Swaine (Eds.). *Tropical rain forest: Disturbance and recovery*, pp. 357–367. The Royal Society, London, UK.
- DE ALWIS, D. P., AND K. ABEYNAYAKE. 1980. A survey of mycorrhiza in some forest trees in Sri Lanka. In P. Mikola (Ed.). *Tropical mycorrhiza research*, pp. 146–153. Clarendon Press, Oxford, UK.
- DE ALWIS, D. P., AND K. ABEYNAYAKE. 1988. Aseptic synthesis of mycorrhizae of *Dipterocarpus zeylandicus*. In F. S. P. Ng (Ed.). *Trees and mycorrhiza: Proceedings of the Asian seminar*, pp. 215–226. Forest Research Institute of Malaysia, Kepong, Malaysia.
- BAUM, C., AND F. MAKESCHIN. 2000. Effects of nitrogen and phosphorus fertilization on mycorrhizal formation of two poplar clones (*Populus trichocarpa* and *P. tremula* × *tremuloides*). *J. Plant Nutr. Soil Sci.* 163: 491–497.
- BECKER, P. 1983. Ectomycorrhizas on *Shorea* (Dipterocarpaceae) seedlings in a lowland Malaysian rainforest. *Malay. For.* 46: 146–170.
- BEIMFORDE, C., N. SCHÄFER, H. DÖRFELT, P. C. NASCIBENE, H. SINGH, J. HEINRICH, J. REITNER, R. S. RANA, AND A. R. SCHMIDT. 2011. Ectomycorrhizas from a Lower Eocene angiosperm forest. *New Phytol.* 192: 988–996.
- BÉREAU, M., M. GAZEL, AND J. GARBAYE. 1997. Les symbioses mycorrhiziennes des arbres de la forêt tropicale humide de Guyana française. *Can. J. Bot.* 75: 711–716.
- BERRIMAN, C. P. 1986. Mycorrhizas of *Shorea* (Dipterocarpaceae) in relation to host specificity and soil phosphorus status. BSc dissertation, University of Aberdeen, UK.
- BREARLEY, F. Q. 2003. The role of ectomycorrhizas in the regeneration of dipterocarp seedlings. PhD dissertation, University of Sheffield, UK.
- BREARLEY, F. Q. 2006. Differences in the growth and ectomycorrhizal community of *Dryobalanops lanceolata* (Dipterocarpaceae) seedlings grown in ultramafic and non-ultramafic soils. *Soil Biol. Biochem.* 38: 3407–3410.
- BREARLEY, F. Q. 2011. The importance of ectomycorrhizas for the growth of dipterocarps and the efficacy of ectomycorrhizal inoculation schemes. In M. Rai, and A. Varma (Eds.). *Diversity and biotechnology of ectomycorrhizae*, pp. 3–17. Springer-Verlag, Berlin, Germany.
- BREARLEY, F. Q., S. PRAJADINATA, P. S. KIDD, J. PROCTOR, AND SURIANTATA. 2004. Structure and floristics of an old secondary rain forest in Central Kalimantan, Indonesia, and a comparison with adjacent primary forest. *For. Ecol. Manage.* 195: 385–397.
- BREARLEY, F. Q., M. C. PRESS, AND J. D. SCHOLE. 2003. Nutrients obtained from leaf litter can improve the growth of dipterocarp seedlings. *New Phytol.* 160: 101–110.
- BREARLEY, F. Q., J. D. SCHOLE, AND S. S. LEE. 2005. Nitrogen nutrition and isotopic discrimination in tropical ectomycorrhizal fungi. *Res. Microbiol.* 156: 184–190.
- BREARLEY, F. Q., J. D. SCHOLE, M. C. PRESS, AND G. PALFNER. 2007. How does light and phosphorus fertilisation affect the growth and ectomycorrhizal community of two contrasting dipterocarp species? *Plant Ecol.* 192: 237–249.
- BROCK, P. M., H. DÖRING, AND M. I. BIDARTONDO. 2008. How to know unknown fungi: The role of a herbarium. *New Phytol.* 181: 719–724.
- BROOK, R. M. 1989. Review of literature on *Imperata cylindrica* (L.) Raueschel with particular reference to south east Asia. *Trop. Pest Manage.* 35: 12–25.
- CERTINI, G. 2005. Effects of fires on properties of forest soils: A review. *Oecologia* 143: 1–10.
- CHALERMPONGSE, A. 1987. Mycorrhizal survey of dry-deciduous and semi-evergreen dipterocarp forest ecosystems in Thailand. In A. J. C. H. Kostermans (Ed.). *Proceedings of the third round table conference on dipterocarps*, pp. 81–103. UNESCO Regional Office for Science and Technology, Jakarta, Indonesia.
- CHANG, Y. S., F. F. LAPEYRIE, AND S. S. LEE. 1994. The survival and competitiveness of *Pisolithus tinctorius* on outplanted seedlings of *Shorea glauca* in Malaysia. In S. Appanah, and K. C. Khoo (Eds.). *Proceedings of the fifth round table conference on dipterocarps*, pp. 165–169. Forest Research Institute of Malaysia, Kepong, Malaysia.
- CHANG, Y. S., S. S. LEE, F. F. LAPEYRIE, AND S. M. YAZID. 1995. The competitiveness of two strains of *Pisolithus tinctorius* on seedlings of three species of dipterocarps under nursery and field conditions: Preliminary results. In R. Wickneswari, A. Z. Yahya, A. H. M. Shariff, D. Haji Ahmad, K. C. Khoo, K. Suzuki, S. Sakurai, and K. Ishii (Eds.). *Proceedings of the international workshop of BIO-REFOR*, Kangar, 1994, pp. 208–212. BIO-REFOR, IUFRO-SPDC, Tokyo, Japan & Forest Research Institute of Malaysia, Kepong, Malaysia.
- CHEN, Y. L., M. C. BRUNDRETT, AND B. DELL. 2000. Effects of ectomycorrhizas and vesicular-arbuscular mycorrhizas, alone or in competition, on root colonization and growth of *Eucalyptus globulus* and *E. urophylla*. *New Phytol.* 146: 545–556.

- CONNELL, J. H., AND M. D. LOWMAN. 1989. Low-diversity tropical rain forests: Some possible mechanisms for their existence. *Am. Nat.* 134: 88–119.
- CORNER, E. J. H. 1972. *Boletus* in Malaysia. Government Printing Office, Singapore.
- CORNER, E. J. H. 1988. Higher fungi. In Earl of Cranbrook (Ed.). *Key environments: Malaysia*, pp. 88–101. Pergamon Press, Oxford, UK.
- DAYANANDAN, S., P. S. ASHTON, S. M. WILLIAMS, AND R. B. PRIMACK. 1999. Phylogeny of the tropical tree family Dipterocarpaceae based on nucleotide sequences of the chloroplast *rbcL* gene. *Am. J. Bot.* 86: 1182–1190.
- DEACON, J. W., S. D. DONALDSON, AND F. T. LAST. 1983. Sequences and interactions of mycorrhizal fungi on birch. *Plant Soil* 71: 257–262.
- DHUNGANA, H. N., D. DUTTA, G. S. SARMA, AND P. HAZARIKA. 1996. Occurrence of vesicular-arbuscular mycorrhizae in seedlings of some forest tree species. *J. Trop. For.* 12: 156–158.
- DUCOUSSO, M., G. BÉNA, C. BOURGEOIS, B. BUYCK, G. EYSSARTIER, M. VINCELETTE, R. RABEVOHITRA, L. RANDRIHASIPARA, B. DREYFUS, AND Y. PRIN. 2004. The last common ancestor of Sarcolaenaceae and Asian dipterocarp trees was ectomycorrhizal before the India-Madagascar separation, about 88 million years ago. *Mol. Ecol.* 13: 231–236.
- HADI, S., AND E. SANTOSO. 1988. Effect of *Russula* spp., *Sclerotium* sp. and *Boletus* sp. on the mycorrhizal development and growth of five dipterocarp species. In M. Mohinder Singh (Ed.). *Agricultural and biological research priorities in Asia*, proceedings of the IFS symposium of science Asia 87, pp. 183–185. International Foundation for Science & Malaysian Scientific Association, Kuala Lumpur, Malaysia.
- HADI, S., AND E. SANTOSO. 1989. Accumulation of macronutrients by five dipterocarp species inoculated with different species of mycorrhizal fungi. In A. Mahadevan, N. Raman, and K. Natarajan (Eds.). *Mycorrhizae for green Asia: Proceedings of the first Asian conference on mycorrhizae*, pp. 139–141. Centre for Advanced Studies on Botany, University of Madras, India.
- VAN DER HEIJDEN, M. G. A., AND I. R. SANDERS. 2002. *Mycorrhizal ecology*. Springer-Verlag, Berlin, Germany.
- HENKEL, T. W. 2003. Monodominance in the ectomycorrhizal *Dicymbe corymbosa* (Caesalpinaceae) from Guyana. *J. Trop. Ecol.* 19: 417–437.
- HENKEL, T. W., M. C. AIME, M. M. L. CHIN, S. L. MILLER, R. VILGALYS, AND M. E. SMITH. in press. Ectomycorrhizal fungal sporocarp diversity and discovery of new taxa in *Dicymbe* monodominant forests of the Guiana Shield. *Biodivers. Conserv.*
- HOBBIE, E. A., AND J. E. HOBBIE. 2008. Natural abundance of ^{15}N in nitrogen-limited forests and tundra can estimate nitrogen cycling through mycorrhizal fungi: A review. *Ecosystems* 11: 815–830.
- HONG, L. T. 1979. A note on dipterocarp mycorrhizal fungi. *Malay. For.* 42: 280–283.
- IBRAHIM, Z., M. N. MAHAT, AND S. S. LEE. 1995. Response of *Hopea odorata* seedlings to biological soil conditioners. In R. Wickneswari, A. Z. Yahya, A. H. M. Shariff, D. Haji Ahmad, K. C. Khoo, K. Suzuki, S. Sakurai, and K. Ishii (Eds.). *Proceedings of the international workshop of BIO-REFOR*, Kangar, 1994, pp. 179–182. BIO-REFOR, IUFRO-SPDC, Tokyo, Japan & Forest Research Institute of Malaysia, Kepong, Malaysia.
- INGLEBY, K., R. C. MUNRO, M. NOOR, P. A. MASON, AND M. J. CLEARWATER. 1998. Ectomycorrhizal populations and growth of *Shorea parvifolia* (Dipterocarpaceae) seedlings regenerating under three different forest canopies following logging. *For. Ecol. Manage.* 111: 171–179.
- INGLEBY, K., L. T. T. THUY, N. T. PHONG, AND P. A. MASON. 2000. Ectomycorrhizal inoculum potential of soils from forest restoration sites in south Vietnam. *J. Trop. For. Sci.* 12: 418–422.
- IRINO, K. O., Y. IBA, S. ISHIZUKA, T. KENZO, S. RIPOT, J. J. KENDAWANG, N. MIYASHITA, K. NARA, T. HOGETSU, I. NINOMIYA, K. IWASAKI, AND K. SAKURAI. 2004. Effects of controlled-release fertilizer on growth and ectomycorrhizal colonization of pot-grown seedlings of the dipterocarp *Dryobalanops lanceolata* in a tropical nursery. *Soil Sci. Plant Nutr.* 50: 747–753.
- IWAMOTO, K., AND K. KITAYAMA. 2002. Abundances of ectomycorrhizas on the slopes of Mount Kinabalu, Sabah, Malaysian Borneo. *Sabah Park. Nat. J.* 5: 239–255.
- JONES, M. D., D. M. DURALL, AND P. B. TINKER. 1990. Phosphorus relationships and production of extramatrical hyphae by two types of willow ectomycorrhizas at different soil phosphorus levels. *New Phytol.* 115: 259–267.
- JÜLICH, W. 1985. Fungi associated with Dipterocarpaceae in Southeast Asia. 1. The genera *Riessia* and *Riessiella*. *Int. J. Mycol. Lichenol.* 2: 123–140.
- KETTLE, C. J. 2010. Ecological considerations for using dipterocarps for restoration of lowland rainforest in Southeast Asia. *Biodivers. Conserv.* 19: 1137–1151.
- LEE, S. S. 1998. Root symbiosis and nutrition. In S. Appanah, and J. M. Turnbull (Eds.). *A review of dipterocarps: Taxonomy, ecology and silviculture*, pp. 99–114. Centre for International Forestry Research, Bogor, Indonesia.
- LEE, S. S. 2005. Macrofungal diversity in Peninsular Malaysia focusing on the ectomycorrhizal fungi. *Clusiana* 44: 57–66.
- LEE, S. S., AND I. J. ALEXANDER. 1994. The response of seedlings of two dipterocarp species to nutrient additions and ectomycorrhizal infection. *Plant Soil* 163: 299–306.
- LEE, S. S., AND I. J. ALEXANDER. 1996. The dynamics of ectomycorrhizal infection of *Shorea leprosula* seedlings in Malaysian rain forests. *New Phytol.* 132: 297–305.
- LEE, S. S., I. J. ALEXANDER, P. H. MOURA-COSTA, AND S. W. YAP. 1996b. Mycorrhizal infection of dipterocarp seedlings in logged and undisturbed forests. In S. Appanah, and K. C. Khoo (Eds.). *Proceedings of the fifth round table conference on dipterocarps*, pp. 157–164. Forest Research Institute of Malaysia, Kepong, Malaysia.
- LEE, S. S., I. J. ALEXANDER, AND R. WATLING. 1997. Ectomycorrhizas and putative ectomycorrhizal fungi of *Shorea leprosula* Miq. (Dipterocarpaceae). *Mycorrhiza* 7: 63–81.
- LEE, S. S., H. BESL, AND S. UJANG. 1995a. Some fungi of the Sungai Halong and surrounding areas, Temengor Forest Reserve, Hulu Perak, Malaysia. *Malay. Nat. J.* 48: 147–155.
- LEE, S. S., F. F. LAPEYRIE, AND S. M. YAZID. 1995b. Techniques for controlled ectomycorrhizal inoculation of dipterocarp seedlings and cuttings. In Supriyanto, and J. T. Kartana (Eds.). *Proceedings of the second symposium on biology and biotechnology of mycorrhizae and third Asian conference on mycorrhizae (ACOM III)*, BIOTROP Special Publication 56, pp. 217–221. SEAMEO BIOTROP, Bogor, Indonesia.
- LEE, S. S., AND K. L. LIM. 1989. Mycorrhizal infection and foliar phosphorus content of seedlings of three dipterocarp species grown in selectively logged forest and a forest plantation. *Plant Soil* 117: 237–241.
- LEE, S. S., AND M. PATAHAYAH. 2003. Host specificity of dipterocarp ectomycorrhizal fungi. In H. Aminah, S. Ani, H. C. Sim, and B. Krishnapillay (Eds.). *Proceedings of the seventh round-table conference on dipterocarps*. 7–10 October 2002, pp. 214–217. Asia Pacific Association of Forestry Research Institutions, Kuala Lumpur, Malaysia.
- LEE, S. S., M. PATAHAYAH, W. S. CHONG, AND F. F. LAPEYRIE. 2008. Successful ectomycorrhizal inoculation of two dipterocarp species with a locally isolated fungus in Peninsular Malaysia. *J. Trop. For. Sci.* 20: 237–247.
- LEE, S. S., M. PATAHAYAH, AND F. F. LAPEYRIE. 2002b. Exotic vs. indigenous ectomycorrhizal fungi for inoculation of dipterocarps. In K. Ishii, M. Matsumori, and K. Suzuki (Eds.). *BIO-REFOR: Proceedings of Tokyo-workshop*, pp. 84–87. BIO-REFOR, IUFRO-SPDC, Tokyo, Japan.
- LEE, S. S., B. K. THI, AND M. PATAHAYAH. 2010. An ectomycorrhizal Thelephoroid fungus of Malaysian dipterocarp seedlings. *J. Trop. For. Sci.* 22: 355–363.
- LEE, S. S., R. WATLING, AND Y. NORAINI SIKIN. 2002a. Ectomycorrhizal basidiomata fruiting in lowland rain forests of peninsular Malaysia. *Bois For. Trop.* 274: 33–43.

- LEE, S. S., R. WATLING, AND E. TURNBULL. 1996a. Ectomycorrhizal fungi as possible bio-indicators in forest management. In N. Hussein, P. S. Bacon, and K. C. Khoo (Eds.). *Forestry and forest products research: Proceedings of the third conference*, Vol. 1, pp. 63–68. Forest Research Institute of Malaysia, Kepong, Malaysia.
- LEE, S. S., R. WATLING, AND E. TURNBULL. 2003. Diversity of putative ectomycorrhizal fungi in Pasoh Forest Reserve. In T. Okuda, N. Manokaran, Y. Matsumoto, K. Niiyama, S. C. Thomas, and P. S. Ashton (Eds.). *Pasoh: Ecology of a lowland rain forest in southeast Asia*, pp. 149–159. Springer-Verlag, Tokyo, Japan.
- LEPAGE, B. A., R. S. CURRAH, R. A. STOCKEY, AND G. W. ROTHWELL. 1997. Fossil ectomycorrhizae from the middle Eocene. *Am. J. Bot.* 84: 410–412.
- LIANG, Y., L.-D. GUO, AND K.-P. MA. 2004. Genetic structure of a population of the ectomycorrhizal fungus *Russula vinosa* in subtropical woodlands in southwest China. *Mycorrhiza* 14: 235–240.
- LÓPEZ-QUINTERO, C. A., G. STRAATSMAN, A. E. FRANCO-MOLANO, AND T. BOEKHOUT. in press. Macrofungal diversity in Colombian Amazon forests varies with regimes of disturbance. *Biodivers. Conserv.*
- LOUIS, I. 1988. Ecto- and endomycorrhizae in the tropical dipterocarp, *Sboorea parvifolia*. *Mycologia* 80: 845–849.
- LOUIS, I., AND E. SCOTT. 1987. *In vitro* synthesis of mycorrhiza in root organ cultures of a tropical dipterocarp species. *Trans. Br. Mycol. Soc.* 88: 565–568.
- MCGUIRE, K. L. 2007. The common ectomycorrhizal net may maintain monodominance in a tropical rain forest. *Ecology* 88: 567–574.
- MCGUIRE, K. L., T. W. HENKEL, I. GRANZOW DE LA CERDA, G. VILLA, F. EDMUND, AND C. ANDREW. 2008. Dual mycorrhizal colonization of forest-dominating tropical trees and the mycorrhizal status of non-dominant tree and liana species. *Mycorrhiza* 18: 217–222.
- MOLINA, R., H. B. MASSICOTTE, AND J. M. TRAPPE. 1992. Specificity phenomena in mycorrhizal symbioses: Community ecological consequences and practical applications. In M. F. Allen (Ed.). *Mycorrhizal functioning: An integrative plant-fungal process*, pp. 357–423. Chapman & Hall, New York.
- MOYERSON, B. 1993. Ectomicorizas y micorizas vesiculares-arbusculares en Caatinga Amazónica. *Scientia Guianae* 3, Caracas, Venezuela.
- MOYERSON, B. 2006. *Pakaraimaea dipterocarpacea* is ectomycorrhizal, indicating an ancient Gondwanaland origin for the ectomycorrhizal habit in Dipterocarpaceae. *New Phytol.* 172: 753–762.
- MOYERSON, B. 2000. Diversity of ectomycorrhizal fungi associated with four species and two genera of Dipterocarpaceae in a field and bioassay experiment in Brunei Darussalam. In Anon. (Ed.). *Tropical mycology 2000 abstracts*, p. 25. British Mycological Society, London, UK.
- NATARAJAN, K., G. SENTHILARASU, V. KUMARASAN, AND T. RIVIÈRE. 2005. Diversity in ectomycorrhizal fungi of a dipterocarp forest in Western Ghats. *Curr. Sci.* 88: 1893–1895.
- NEWBERY, D. McC., I. J. ALEXANDER, D. W. THOMAS, AND J. S. GARTLAN. 1988. Ectomycorrhizal rainforest legumes and soil phosphorus in Korup National Park, Cameroon. *New Phytol.* 109: 433–450.
- NEWMAN, M. F., P. F. BURGESS, AND T. C. WHITMORE. 1996. *Manuals of dipterocarps for foresters: Borneo Island light hardwoods*. Royal Botanic Garden, Edinburgh, UK.
- NEWMAN, M. F., P. F. BURGESS, AND T. C. WHITMORE. 1998. *Manuals of dipterocarps for foresters: Borneo Island medium and heavy hardwoods*. Royal Botanic Garden, Edinburgh, UK.
- NEWSHAM, K. K., A. H. FITTER, AND A. R. WATKINSON. 1995. Multifunctionality and biodiversity in arbuscular mycorrhizas. *TREE* 10: 407–411.
- PALMIOTTO, P. A., S. J. DAVIES, K. A. VOGT, P. M. S. ASHTON, D. J. VOGT, AND P. S. ASHTON. 2004. Soil-related habitat specialization in dipterocarp rain forest tree species in Borneo. *J. Ecol.* 92: 609–623.
- PAOLI, G. D., L. M. CURRAN, AND D. R. ZAK. 2006. Soil nutrients and beta diversity in the Bornean Dipterocarpaceae: Evidence for niche partitioning by tropical rain forest trees. *J. Ecol.* 94: 157–170.
- PATAHAYAH, M., P. C. CYNTHIA, AND S. S. LEE. 2003. Optimizing growth conditions for ectomycorrhizal inoculum production of the Malaysian strain of *Pisolithus tinctorius*. In A. H. Mohamed, I. H. Parlan, S. Ibrahim, S. Y. M. Yussof, H. F. Lim, M. A. M. Idris, A. R. A. Ghani, S. Ujang, and K. A. Hamzah (Eds.). *Tropical forestry research in the new millennium: Meeting demands and challenges. Proceedings of the international conference on forestry and forest products research (CFFPR 2001)*, pp. 551–552. Asia Pacific Association of Forestry Research Institutions & Forest Research Institute of Malaysia, Kuala Lumpur, Malaysia.
- PEAY, K. G., P. G. KENNEDY, S. J. DAVIES, S. TAN, AND T. D. BRUNS. 2010. Potential link between plant and fungal distributions in a dipterocarp rainforest: Community and phylogenetic structure of tropical ectomycorrhizal fungi across a plant and soil ecotone. *New Phytol.* 185: 529–542.
- PEH, K. S.-H., S. L. LEWIS, AND J. LLOYD. 2011. Mechanisms of monodominance in diverse tropical tree-dominated systems. *J. Ecol.* 99: 891–898.
- PEYRONEL, B., AND B. FASSI. 1957. Micorrize ectotrofiche in una Caesalpinacea del Congo Belga. *Atti Accad. Sci. Torino* 91: 569–576.
- PHOSRI, C., S. PÖLME, A. F. S. TAYLOR, U. KÖIJALG, N. SUWANNASAI, AND L. TEDERSOO. in press. Diversity and community composition of ectomycorrhizal fungi in a dry deciduous dipterocarp forest in Thailand. *Biodivers. Conserv.*
- PROCTOR, J., J. M. ANDERSON, P. CHAI, AND H. W. VALLACK. 1983. Ecological studies in four contrasting lowland rain forests in Gunung Mulu National Park, Sarawak. I. Forest environment, structure and floristics. *J. Ecol.* 71: 237–260.
- READ, D. J. 1986. Non-nutritional effects of mycorrhizal infection. In V. Gianinazzi-Pearson, and S. Gianinazzi (Eds.) *Physiological and genetical aspects of mycorrhizae*, pp. 169–176. INRA, Paris, France.
- READ, D. J. 1998. Mycorrhiza – the state of the art. In A. Varma, and B. Hock (Eds.). *Mycorrhiza structure, function, molecular biology and biotechnology (2nd Edition)*, pp. 3–34. Springer-Verlag, Berlin, Germany.
- READ, D. J. 1999. The ecophysiology of mycorrhizal symbioses with special reference to impacts upon plant fitness. In M. C. Press, J. D. Scholes, and M. G. Barker (Eds.). *Physiological plant ecology*, pp. 133–151. Blackwell Scientific, Oxford, UK.
- REDECKER, D., T. M. SZARO, R. J. BOWMAN, AND T. D. BRUNS. 2001. Small genets of *Lactarius xanthogalactus*, *Russula cremoricolor* and *Amanita francheti* in late-stage ectomycorrhizal successions. *Mol. Ecol.* 10: 1025–1034.
- RIVIÈRE, T., K. NATARAJAN, AND B. DREYFUS. 2006. Spatial distribution of ectomycorrhizal Basidiomycete *Russula* subsect. *Foetentinae* populations in a primary dipterocarp rainforest. *Mycorrhiza* 16: 143–148.
- ROY, M., S. WATTANA, A. STIER, F. RICHARD, S. VESSABUTR, AND M.-A. SELOSSE. 2009. Two mycoheterotrophic orchids from Thailand tropical dipterocarpacean forests associate with a broad diversity of ectomycorrhizal fungi. *BMC Biol.* 7: 51.
- SANER, P. G. 2009. Ecosystem carbon dynamics in logged forests of Malaysian Borneo. PhD dissertation, University of Zurich, Switzerland.
- SANER, P. G., C. PHILIPSON, R. C. ONG, N. MAJALAP, S. EGLI, AND A. HECTOR. 2011. Positive effects of ectomycorrhizal colonization on growth of seedlings of a tropical tree across a range of forest floor light conditions. *Plant Soil* 338: 411–421.
- SANTOSO, E. 1988. Pengaruh mikoriza terhadap diameter batang dan bobot kering anakan Dipterocarpaceae. *Bul. Penelit. Hutan*: 11–21.
- SANTOSO, E. 1991. Pengaruh beberapa fungi mikoriza terhadap penyerapan unsur hara pada lima jenis Dipterocarpaceae. *Bul. Penelit. Hutan*: 11–18.
- SHAMSUDDIN, M. N. 1979. Mycorrhizas of tropical forest trees. In J. I. Furtado (Ed.). *Abstracts: Fifth international symposium of tropical ecology*, p. 173. University of Malaya, Kuala Lumpur, Malaysia.
- SHI, Z. Y., Y. L. CHEN, AND R. J. LIU. 2002. Preliminary survey on arbuscular mycorrhizas of Dipterocarpaceae. *Mycosystemia* 22: 82–87.
- SHI, Z. Y., F. Y. WANG, Y. L. WEI, AND Y. L. CHEN. 2007. Observations on arbuscular mycorrhizas on Dipterocarpaceae grown in tropical rainforest in China. *Am.-Eurasian J. Agric. Environ. Sci.* 2: 247–254.

- SHIVA, M. P., AND I. JANTAN. 1998. Non-timber forest products from dipterocarps. In S. Appanah, and J. M. Turnbull (Eds.). A review of dipterocarps: Taxonomy, ecology and silviculture, pp. 187–197. Centre for International Forestry Research, Bogor, Indonesia.
- SIMARD, S. W., D. A. PERRY, M. D. JONES, D. D. MYROLD, D. M. DURALL, AND R. MOLINA. 1997. Net transfer of carbon between ectomycorrhizal tree species in the field. *Nature* 388: 579–582.
- SINGH, K. G. 1966. Ectotrophic mycorrhiza in equatorial rain forests. *Malay. For.* 29: 13–18.
- SIRIKANTARAMAS, S., N. SUGIOKA, S. S. LEE, L. A. MOHAMED, H. S. LEE, A. E. SZMIDT, AND T. YAMAZAKI. 2003. Molecular identification of ectomycorrhizal fungi associated with Dipterocarpaceae. *Tropics* 13: 69–77.
- SLIK, J. W. F., N. RAES, S.-I. AIBA, F. Q. BREARLEY, C. H. CANNON, E. MEJJAARD, H. NAGAMASU, R. NILUS, G. D. PAOLI, A. D. POULSEN, D. SHEIL, E. SUZUKI, J. L. C. H. VAN VALKENBURG, C. O. WEBB, P. WILKIE, AND S. WULFFRAAT. 2009. Environmental correlates for tropical tree diversity and distribution patterns in Borneo. *Divers. Distrib.* 15: 523–532.
- SMITH, S. E., AND D. J. READ. 2008. *Mycorrhizal symbiosis* (3rd Edition). Academic Press, San Diego.
- SMITS, W. T. M. 1983. Dipterocarps and mycorrhiza – an ecological adaptation and a factor in forest regeneration. *Flora Males. Bull.* 36: 3926–3937.
- SMITS, W. T. M. 1985. Specificity of dipterocarp mycorrhiza. In R. Molina (Ed.). *Proceedings of the 6th North American conference on mycorrhizae*, p. 364. Forest Research Laboratory, Corvallis, Oregon.
- SMITS, W. T. M. 1994. *Dipterocarpaceae: Mycorrhizae and regeneration*. The Tropenbos Foundation, Wageningen, The Netherlands.
- ST. JOHN, T. V. 1980. A survey of mycorrhizal infection in an Amazonian rain forest. *Acta Amazon.* 10: 527–533.
- SUHARDI. 2000. Treatment to development mycorrhizal formation on dipterocarp seedlings. In E. Guhardja, M. Fatawi, M. Sutisna, T. Mori, and S. Ohta (Eds.) *Rainforest ecosystems of East Kalimantan: El Niño, drought, fire and human impacts*, pp. 245–250. Springer-Verlag, Tokyo, Japan.
- SUHARDI, A. DARMAWAN, AND E. FARIDAH. 1993. Effect of shading, fertilizer and mulching with alang-alang to the early growth and mycorrhiza formation of *Shorea bracteolata* in Bukit Suharto. In Anon. (Ed.). *BIO-REFOR: Proceedings of Tsukuba-workshop*, pp. 161–173. BIO-REFOR, IUFRO-SPDC, Tsukuba Science City, Japan.
- TATA, M. H. L., S. HADI, C. KUSMANA, AND ACHMAD (2003) Effect of forest fire on the survival of ectomycorrhizal fungi on dipterocarps. In H. Aminah, S. Ani, H. C. Sim, and B. Krishnapillay (Eds.). *Proceedings of the seventh round-table conference on dipterocarps*. 7–10 October 2002, pp. 173–178. Asia Pacific Association of Forestry Research Institutions, Kuala Lumpur, Malaysia.
- TATA, M. H. L., M. VAN NOORDWIJK, R. SUMMERBELL, AND M. J. A. WERGER. 2010. Limited response to nursery-stage mycorrhiza inoculation of *Shorea* seedlings planted in rubber agroforest in Jambi, Indonesia. *New For.* 39: 51–74.
- TAWARAYA, K., Z. TAKAYA, M. TURJAMAN, S. J. TUAH, S. H. LIMIN, Y. TAMAI, J. Y. CHA, T. WAGATSUMA, AND M. OSAKI. 2003. Arbuscular mycorrhizal colonization of tree species grown in peat swamp forests of Central Kalimantan, Indonesia. *For. Ecol. Manage.* 182: 381–386.
- TAYLOR, A. F. S. 2002. Fungal diversity in ectomycorrhizal communities: Sampling effort and species detection. *Plant Soil* 244: 19–28.
- TEDERSOO, L., M. BAHRAM, T. JAIRUS, E. BECHEM, S. CHINOYA, R. MPUMBA, M. LEAL, E. RANDRIANJOHANY, S. RAZAFIMANDIMBISON, A. SADAM, T. NADEL, AND U. KÖLJALG. 2011. Spatial structure and the effects of host and soil environments on communities of ectomycorrhizal fungi in wooded savannas and rain forests of Continental Africa and Madagascar. *Mol. Ecol.* 20: 3071–3080.
- TEDERSOO, L., T. W. MAY, AND M. E. SMITH. 2010. Ectomycorrhizal lifestyle in fungi: Global diversity, distribution, and evolution of phylogenetic lineages. *Mycorrhiza* 20: 217–263.
- TEDERSOO, L., AND K. NARA. 2010. General latitudinal gradient of biodiversity is reversed in ectomycorrhizal fungi. *New Phytol.* 185: 351–354.
- TEDERSOO, L., T. SUVI, K. BEAVER, AND U. KÖLJALG. 2007a. Ectomycorrhizal fungi on the Seychelles: Diversity patterns and host shifts from the native *Vateriopsis seychellarum* (Dipterocarpaceae) and *Intsia bijuga* (Caesalpinaceae) to the introduced *Eucalyptus robusta* (Myrtaceae) but not *Pinus caribaea* (Pinaceae). *New Phytol.* 175: 321–333.
- TEDERSOO, L., T. SUVI, K. BEAVER, AND I. SAAR. 2007b. Ectomycorrhizas of *Coltricia* and *Coltriciella* (Hymenochaetales, Basidiomycota) on Caesalpinaceae, Dipterocarpaceae and Myrtaceae in Seychelles. *Mycol. Prog.* 6: 101–107.
- TENNAKON, M. M. D., I. A. U. N. GUNATILLEKE, K. M. HAFEEL, G. SENEVIRATNE, C. V. S. GUNATILLEKE, AND P. M. S. ASHTON. 2005. Ectomycorrhizal colonization and seedling growth of *Shorea* (Dipterocarpaceae) species in simulated shade environments of a Sri Lankan rain forest. *For. Ecol. Manage.* 208: 399–405.
- TRESEDER, K. K. 2004. A meta-analysis of mycorrhizal responses to nitrogen, phosphorus and atmospheric CO₂ in field studies. *New Phytol.* 164: 347–355.
- TUPAS, G. L., AND P. E. SAJISE. 1976. Mycorrhizal associations in some savanna and reforestation trees. *Kalikanan* 5: 235–240.
- TURJAMAN, M., H. SAITO, E. SANTOSO, A. SUSANTO, S. GAMAN, S. H. LIMIN, M. SHIBUYA, K. TAKAHASHI, Y. TAMAI, M. OSAKI, AND K. TAWARAYA. 2007. Effect of ectomycorrhizal fungi inoculated on *Shorea balangeran* under field conditions in peat-swamp forests. In J. O. Rieley, C. J. Banks, and B. Radjaguguk (Eds.). *Proceedings of the international symposium and workshop on tropical peatland*, Yogyakarta, 27–29 August 2007, pp. 143–148. CARBOPEAT, University of Leicester, UK.
- TURJAMAN, M., Y. TAMAI, H. SEGAI, S. H. LIMIN, J. Y. CHA, M. OSAKI, AND K. TAWARAYA. 2005. Inoculation with the ectomycorrhizal fungi *Pisolithus arhizus* and *Scleroderma* sp. improves early growth of *Shorea pinanga* nursery seedlings. *New For.* 30: 67–73.
- TURJAMAN, M., Y. TAMAI, H. SEGAI, S. H. LIMIN, M. OSAKI, AND K. TAWARAYA. 2006. Increase in early growth and nutrient uptake of *Shorea seminis* inoculated with two ectomycorrhizal fungi. *J. Trop. For. Sci.* 18: 243–249.
- TURNER, I. M., N. D. BROWN, AND A. C. NEWTON. 1993. The effect of fertilizer addition on dipterocarp seedling growth and mycorrhizal infection. *For. Ecol. Manage.* 57: 329–337.
- VAN ROSENDAEL, J., AND A. THORENAAR. 1924. De natuurlijke verjonging van Ngerawan (Hopea mengarawan Miq.) in zuid Sumatra. *Tectona* 16: 519–567.
- DE VOOGD, C. N. A. 1933. Cultuurproeven met *Shorea platyclados* v. Sl. in Redjang en Lebong. *Tectona* 26: 703–713.
- WATLING, R., AND S. S. LEE. 1995. Ectomycorrhizal fungi associated with members of the Dipterocarpaceae in Peninsular Malaysia – I. *J. Trop. For. Sci.* 7: 657–669.
- WATLING, R., AND S. S. LEE. 1998. Ectomycorrhizal fungi associated with members of the Dipterocarpaceae in Peninsular Malaysia – II. *J. Trop. For. Sci.* 10: 421–430.
- WATLING, R., AND S. S. LEE. 2007. Mycorrhizal mycodiversity in Malaysia. In E. B. G. Jones, K. D. Hyde, and S. Vikineswary (Eds.). *Malaysian fungal diversity*, pp. 201–219. Mushroom Research Centre, University of Malaya & Ministry of Natural Resources and Environment, Kuala Lumpur, Malaysia.
- WATLING, R., S. S. LEE, AND E. TURNBULL. 1998. Putative ectomycorrhizal fungi of Pasoh Forest Reserve, Negri Sembilan, Malaysia. In S. S. Lee, Y. M. Dan, I. D. Gauld, and J. Bishop (Eds.). *Conservation, management and development of forest resources*, pp. 96–104. Forest Research Institute of Malaysia, Kepong, Malaysia.
- WATLING, R., S. S. LEE, AND E. TURNBULL. 2002. The occurrence and distribution of putative ectomycorrhizal basidiomycetes in a regenerating south-east Asian rainforest. In R. Watling, J. C. Frankland, A. M. Ainsworth, S. Isaac, and C. H. Robinson (Eds.). *Tropical mycology: Volume 1 macromycetes*, pp. 25–43. CAB International, Wallingford, UK.

- WATLING, R., S. S. LEE, AND E. TURNBULL. 2006. Notes taxonomiques et floristiques sur quelques bolets tropicaux et groupes proches. *Bull. Soc. Mycol. Fr.* 122: 327–352.
- WATLING, R., A. F. S. TAYLOR, S. S. LEE, K. SIMS, AND I. J. ALEXANDER. 1995. A rainforest *Pisolithus*; its taxonomy and ecology. *Nova Hedwig* 61: 417–429.
- YASMAN, I. 1995. Dipterocarpaceae tree-mycorrhizae-seedling connections. PhD thesis, Wageningen Agricultural University, The Netherlands.
- YAZID, S. M., S. S. LEE, AND F. F. LAPEYRIE. 1994. Growth stimulation of *Hopea* spp. (Dipterocarpaceae) seedlings following mycorrhizal inoculation with an exotic strain of *Pisolithus tinctorius*. *For. Ecol. Manage.* 67: 339–343.
- YAZID, S. M., S. S. LEE, AND F. F. LAPEYRIE. 1996. Mycorrhizal inoculation of *Hopea odorata* (Dipterocarpaceae) in the nursery. *J. Trop. For. Sci.* 9: 276–278.
- YUWA-AMORNPIITAK, T., T. VICHITSOONTHONKUL, M. TANTICHAROEN, S. CHEEVADHANARAK, AND S. RATCHADAWONG. 2006. Diversity of ectomycorrhizal fungi on Dipterocarpaceae in Thailand. *J. Biol. Sci.* 6: 1059–1064.